



rijksuniversiteit  
groningen



25-nov-24

| 1

# Information session Psychology - Master Admission & Selection -

By

**Lex Jurna**

Study advisor of the psychology programme



## Overall 11 master's programs

Eight English programs:\*

- Clinical Forensic Psychology and Victimology
- Theory and History of Psychology (only one in Europe)
- Talent Development and Creativity
- Clinical Neuropsychology
- Environmental Psychology
- Applied Cognitive neuroscience
- Applied Social Psychology
- Work, Organizational and Personnel Psychology

\*Current range of master's



Three Dutch programs:\*

- Klinische psychologie
- Ontwikkelingspsychologie
- Klinische neuropsychologie

\*Current range of master's







## Prior education and the admission criteria

| 4

- › A bachelor's in psychology at the University of Groningen
- › A bachelor's in psychology at another Dutch university;
- › A bachelor's other than psychology at a Dutch university;
- › A bachelor's in psychology or bachelor's with a strong focus on psychology at a foreign academic university;
- › A bachelor's of applied psychology at a Dutch HBO institution (requires a pre-master).

Visit our website and follow the steps:

<https://www.rug.nl/gmw/masters/psychology/>





## General admission criteria

- › Bachelor's diploma of an academic university
- › Substantive psychology courses (60 EC)
- › Statistics (at least 15 EC)
- › Psychological research methodology (at least 10 EC)
- › Reliability and validity of psychological tests (at least 5 EC)
- › Theory/philosophy of science and/or history of psychology (at least 5EC)

Total of 95 EC

Bachelor's of psychology from the University of Groningen or another Dutch university?  
For some master's tracks your diploma satisfies all of the above criteria:

THP, TDC, EP, ACN, ASP and WOP



## Track specific criteria

For some tracks there are more specific criteria:

- › Klinische psychologie
- › Clinical forensic psychology and victomology
- › Klinische neuropsychologie/ Clinical neuropsychology
- › Ontwikkelingspsychologie







## Specific track criteria

In addition to the general criteria, for the tracks below there are track specific criteria. These criteria should be satisfied by ALL students interested in those tracks. When relevant for your master's track of choice, please carefully inspect the track-specific criteria.

**Please note:** Admission to the master's programme is possible only on the basis of Bachelor courses.

+ Klinische Psychologie and Clinical Forensic Psychology & Victimology

+ Clinical Neuropsychology and Klinische Neuropsychologie

+ Ontwikkelingspsychologie

+ All other tracks

> **Substantive psychology courses** (at least 60 EC) on psychological theories and application (no skills courses).

At least 20 EC should cover the field of Clinical Psychology, comparable to the University of Groningen courses:

- Klinische psychologie (NL- 5 EC)
- Clinical psychology (ENG - 5 EC)
- Psychopathology: symptoms, classifications and diagnosis (5 EC)
- Understanding psychopathology (EN - 5 EC)
- Diagnostiek in de Klinische Psychologie (NL - 5 EC)
- Diagnosis and assessment (ENG - 5 EC)
- Cognitive behavioral processes across disorders (EN - 5 EC)
- Overzicht van psychotherapie (NL - 5 EC)
- Overview of Psychotherapy (EN - 5 EC)
- Introduction to cognitive behavioural therapies (5 EC)
- Forensische psychologie (NL - 5 EC)
- Capita Selecta Forensic psychology (ENG, literature study - 5 EC)
- Seksuologie (NL - 5 EC)
- Capita Selecta Human sexuality (literature study, ENG - 5 EC)
- Deception in Clinical settings (EN - 5 EC)

> **Communication and diagnostic skills** ( at least 5 EC), comparable to the University of Groningen course 'Communication and Diagnostic Skills'

> **A bachelor thesis or comparable written thesis** (at least 9 EC).



25-nov-24 | 8





## Proof of language proficiency

For Dutch tracks:

- › Babel language certificate Dutch for medics B2+ (schrijven and spreken)
- › Diploma from a Dutch-language secondary school
  
- › The English tracks require you to prove that your English skills are sufficient\* via for example a Cambridge certificate, IELTS or TOEFL

**\*This does not count for students that finished VWO in the Netherlands or have an academic bachelor's from a Dutch university and for students that are native English speakers for example**



## Deadlines master tracks with selection

- › 1st of March for start in September
- › 1st of October for start in February\*
  
- › Clinical Forensic Psychology and Victimology
- › Clinical Neuropsychology
- › Talent Development and Creativity\*\*
  
- › Klinische psychologie
- › Ontwikkelingspsychologie
- › Klinische neuropsychologie

\*CFPV, EP and TDC do not start per February

\*\* Might drop selection in near future



## Deadlines master tracks without selection

- › 1 May start in September
- › 15 November start in February\*
  
- › Applied Cognitive neuroscience
- › Applied Social Psychology
- › Environmental Psychology
- › Theory and History of Psychology (only one in Europe)
- › Work, Organizational and Personnel Psychology

\*ASP does not start per February





## Application procedure

You always have to sign up for the master's of psychology at **two websites**:

1. Studielink,
2. At the website of Psychology, Groningen.

Although in Studielink you can choose only one track, in the application form at the Psychology website you can enter a first and second choice, and these will be used for handling your application. If you choose a non-selective master track you cannot sign up for a second choice.

**MAKE YOUR CHOICE CAREFULLY. AFTER THE DEADLINE, YOU CAN NO LONGER SWITCH TO A DIFFERENT TRACK ALSO NOT DURING THE MASTER PROGRAMME!**

For students with a non-Dutch diploma there is an admissions fee of 100 euros



## Limited capacity per master's track with selection

Total number of places for the academic year 2025 - 2026

Especially the clinical tracks are really popular.

	<b>KP</b>	<b>CN</b>	<b>KN</b>	<b>CFPV</b>	<b>O</b>	<b>TDC</b>	
	48	10	37	30	20	34	<b>Sep</b>
	26	5	18	0	10	0	<b>Feb</b>



## Selection procedure (on site)\*

- › When there are more applicants than available places
- › Test about topics within the field of psychology, from many subdisciplines, and also on research methods and statistics
- › 16 November 2024 (start February 2025)
- › 3 May 2025 (start September 2026)
- › Information about the test and example questions are available on the website:

<https://www.rug.nl/gmw/psychology/education/master/application-admission-and-selection/selectieprocedure>

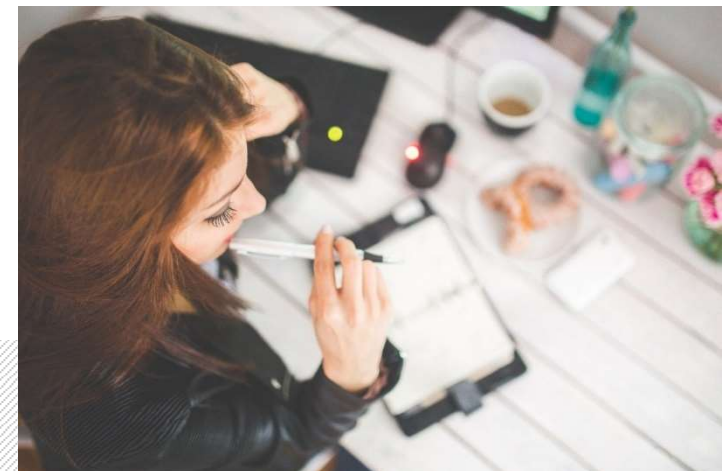
**\*This might change in the future/ exceptions do exist**





## Placement procedure

- › Applications will be split in a High Score Category and a Low Score Category
- › Drawing of lots between students in High and that have written a serious motivation letter
- › Waiting list
- › If there are still places left, they will be distributed by lot among those in Low
- › First choice full? If there are, for your second choice, still available places, you might get a place there





## You didn't get a place?

- › You can try again
- › You can partake as many times as you want.



## Don't meet the master's requirements?

- › Pre-master (not for all tracks)

Or it might be possible to

- › Acquire missing credits via Open modules (UG), Open Universiteit or a different research/academic university





## Zorgprestatie model and LOGO-verklaring

- › In order to work as a Master Psycholoog in the Netherlands in some cases it is required to meet the Zorgprestatie model requirements (volwassene GGZ en FZ):
- › <https://www.zorgprestatie model.nl/nieuws/alternatief-logo-verklaring-bekend/>
- › To be allowed to start a post-master (GZ-opleiding) you need a LOGO-verklaring
- › Our master's will not be enough on its own to meet these requirements!
- › <https://www.ppo-opleidingen.nl/opleidingen/opleiding-tot-gz-psycholoog/toelatingsprocedure-en-kosten/verklaring-vooropleiding-tbv-logo-verklaring>



## Contact information

Admissions board:

[Toelatingscommissie.masterpsy@rug.nl](mailto:Toelatingscommissie.masterpsy@rug.nl)

Selection:

[selection.masterpsy@rug.nl](mailto:selection.masterpsy@rug.nl)

Study advisors

<https://fbss.as.me> or +31 50 363 6301  
[studieadvies.psy@rug.nl](mailto:studieadvies.psy@rug.nl)

More information:

<https://www.rug.nl/masters/psychology/>

Recordings and Presentations:

[https://www.rug.nl/gmw/education/master/presentaties-masterweek/presentations-master\\_s-week-faculty-bss](https://www.rug.nl/gmw/education/master/presentaties-masterweek/presentations-master_s-week-faculty-bss)