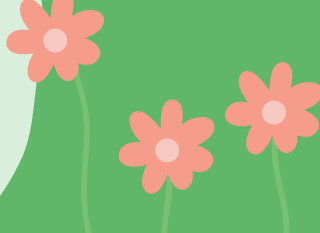


# FACADE GARDENS

arranging a facade garden

## A GREEN CITY

**Could your building use some extra greenery?** Then take a look at the options for a facade garden. In this guide you can read exactly what you can do!



## POSSIBILITIES

Consult with your manager and the building manager whether permission can be given for a facade garden. A facade garden is a **maximum of 45cm deep**. Also take into account sufficient walking space on the sidewalk.



## APPLICATION

Do you have permission? **Then request a facade garden from the municipality.** In some cases you can install it yourself, but in the city center, the Ebbingekwartier, protected city/village views and monuments, you must submit an **application** via the municipality. Scan the QR code for more **information**.



## INSTALLATION

In the above mentioned situations, the municipality installs the facade garden. What you still have to do yourself is purchase and plant the plants that you want to place in the facade garden.



## BIODIVERSITY

Biodiversity is not doing well in the Netherlands. This is due to climate change, urbanization and the extensive use of pesticides. Do you not only want to make your surroundings greener by installing a facade garden, but also do something for nature? Then choose native and pesticide-free plants from a local plant nursery. **Do you choose for this? Then you can submit the invoice for the plants to the Green Office!**



## MAINTENANCE

A facade garden usually requires little maintenance. In the beginning, it is good to weed occasionally to give the new plants room to grow. In dry periods and in the weeks after planting, it is smart to water occasionally. **Arrange the maintenance with your colleagues, because this is something you are responsible for together.** This way you will also get to know your colleagues better!

## WHAT DOES A FACADE GARDEN LOOK LIKE?

examples of facade gardens at UG buildings and tips

**Visserstraat 47-49** is the location of the AMD and the Green Office. In May 2024, a facade garden was created here. The construction was done by the municipality, the planting by a group of colleagues.



BEFORE



AFTER PLANTING



AFTER 4 MONTHS



## OUDE KIJK IN'T JATSTRAAT



## TOOLS

- Garden shovels
- Gardening gloves
- Watering can(s)
- A bin for collecting green waste (from weeding)



## TIPS

- Choose a good time to plant your facade garden. Spring is a favorable time, but so is fall.
- Check if the garden is in sun or shade and adjust the planting accordingly.
- Plant some pesticide-free flower bulbs. The garden will look beautiful early in spring!
- Fill up the facade garden well to prevent cats from using it as a litter box.
- [Find more tips here!](#)



greenoffice